

## RPJP: PI relay

### Areas of application

Pneumatic control in combination with appropriate transducers of temperature, pressure, differential pressure, humidity and flow rate.

### Features

- Conversion of a proportional (P) controller into a proportional integral (PI) controller.
- Controller front panel is printed with circuit diagram for rapid identification of function
- Reversible control action
- Thermoplastic housing suitable for wall or top-hat rail mounting
- Compressed air connections with Rp 1/8" female thread
- Complies with directive 97/23/EC Art. 3.3 on pressure equipment

### Technical description

- Supply pressure 1.3 bar  $\pm$  0.1
- Two input signals
- One output signal



T03075



Y03177

Type	Description	Air output	Air consumption <sup>1)</sup>	Weight kg
<b>RPJP 80 F001</b>	PI function	400 l <sub>n</sub> /h	27 l <sub>n</sub> /h	0,2
Supply pressure <sup>2)</sup>	1,3 bar $\pm$ 0,1	Permissible ambient temp.		0...55 °C
Input pressure	0,2...1,0 bar	Connection diagram		<a href="#">A02885</a>
Output pressure	0,2...1,0 bar	Dimension drawing		<a href="#">M297107</a>
Setpoint X <sub>S</sub>	0...100%	Fitting instructions		<a href="#">MV 3254</a>
Setpoint remote adjustment	0...100%			
Reset time	0,2...3 min			
with accessory 297277	3...6 min			

### Accessories

- 0296936 000\*** Fixing bracket for rail EN 60715, 35 × 7,5 and 35 × 15  
**0297103 000** Bag of ten scales, for use according to transducer  
**0297113 000\*** Manometer bracket for fitting two XMP includes kit; MV 3255  
**0297091 000\*** Cover for spare apertures (for manometers), when 0297113 is used  
**0297277 000** Resistor and scale for increasing the reset time

<sup>\*)</sup> Dimension drawing or wiring diagram are available under the same number

<sup>1)</sup> Without transducer. Air consumption for transducer: an additional 33 l<sub>n</sub>/h for connection 3

<sup>2)</sup> See Section 60 on regulations concerning the quality of supply air, especially at low ambient temperatures

### Operation

The change of input pressure occurring at connection 3 is transferred to connection 2.

The setpoint and reset time can be set at the relay.

Control action A (factory setting): rising input pressure produces rising output pressure.

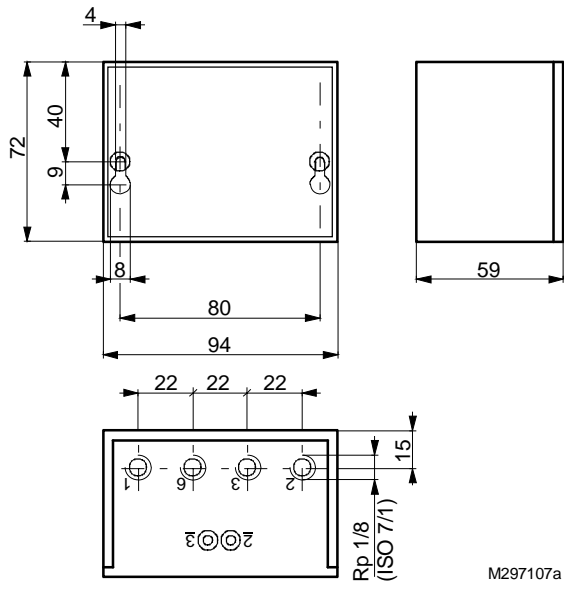
Control action B (reversible): rising input pressure produces falling output pressure.

A variable pressure applied to connection 6 allows remote adjustment of the setpoint. The in-built set-point adjuster then acts as a minimum limiter. There is an integrated restrictor (Ø 0,2 mm) for supplying the transducer.

### По вопросам продаж и поддержки обращайтесь:

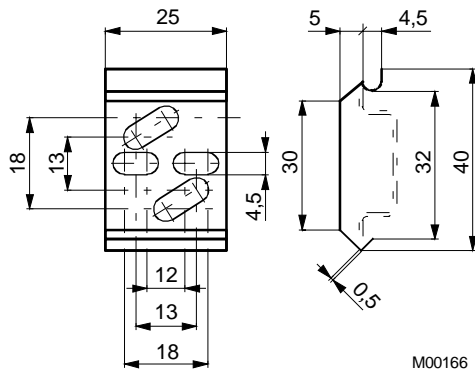
Архангельск +7 (8182) 45-71-35	Калининград +7 (4012) 72-21-36	Новороссийск +7 (8617) 30-82-64	Сочи +7 (862) 279-22-65
Астана +7 (7172) 69-68-15	Калуга +7 (4842) 33-35-03	Новосибирск +7 (383) 235-95-48	Ставрополь +7 (8652) 57-76-63
Астрахань +7 (8512) 99-46-80	Кемерово +7 (3842) 21-56-70	Омск +7 (381) 299-16-70	Сургут +7 (3462) 77-96-35
Барнаул +7 (3852) 37-96-76	Киров +7 (8332) 20-58-70	Орел +7 (4862) 22-23-86	Сызрань +7 (8464) 33-50-64
Белгород +7 (4722) 20-58-80	Краснодар +7 (861) 238-86-59	Оренбург +7 (3532) 48-64-35	Сыктывкар +7 (8212) 28-83-02
Брянск +7 (4832) 32-17-25	Красноярск +7 (391) 989-82-67	Пенза +7 (8412) 23-52-98	Тверь +7 (4822) 39-50-56
Владивосток +7 (4232) 49-26-85	Курск +7 (4712) 23-80-45	Первоуральск +7 (3439) 26-01-18	Томск +7 (3822) 48-95-05
Владимир +7 (4922) 49-51-33	Липецк +7 (4742) 20-01-75	Пермь +7 (342) 233-81-65	Тула +7 (4872) 44-05-30
Волгоград +7 (8442) 45-94-42	Магнитогорск +7 (3519) 51-02-81	Ростов-на-Дону +7 (863) 309-14-65	Тюмень +7 (3452) 56-94-75
Воронеж +7 (4732) 12-26-70	Москва +7 (499) 404-24-72	Рязань +7 (4912) 77-61-95	Ульяновск +7 (8422) 42-51-95
Екатеринбург +7 (343) 302-14-75	Мурманск +7 (8152) 65-52-70	Самара +7 (846) 219-28-25	Уфа +7 (347) 258-82-65
Иваново +7 (4932) 70-02-95	Наб.Челны +7 (8552) 91-01-32	Санкт-Петербург +7 (812) 660-57-09	Хабаровск +7 (421) 292-95-69
Ижевск +7 (3412) 20-90-75	Ниж.Новгород +7 (831) 200-34-65	Саранск +7 (8342) 22-95-16	Чебоксары +7 (8352) 28-50-89
Иркутск +7 (3952) 56-24-09	Нижевартовск +7 (3466) 48-22-23	Саратов +7 (845) 239-86-35	Челябинск +7 (351) 277-89-65
Йошкар-Ола +7 (8362) 38-66-61	Нижнекамск +7 (8555) 24-47-85	Смоленск +7 (4812) 51-55-32	Череповец +7 (8202) 49-07-18
Казань +7 (843) 207-19-05			Ярославль +7 (4852) 67-02-35

**Dimension drawing**

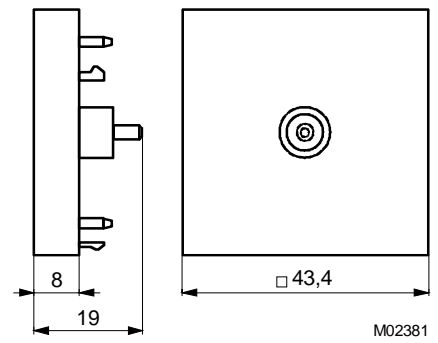


**Accessories**

296936



297091



297113

