

XMP: Manometer for indicating measured values

Areas of application

Displaying measured values in pneumatic control equipment.

Features

- Part of the Centair family of systems
- Several versions for displaying different values and ranges
- Pressure gauges are suitable for incorporating into standard controllers in the RCP product range
- Accessories make it possible to build into various controllers or panels
- Removable Plexiglas cover for readjusting the pointer
- Connection via thread G 1/8" A or 2.3 mm \varnothing plug nipple
- Complies with directive 97/23/EC Art. 3.3 on pressure equipment



T03074



Y03334

Technical description

- Pressure gauge in accuracy class 1.6

Type	Scale range	Rough scale	Use	Weight kg
XMP 020/40 F001	-20...40 °C	0,2...1,0 bar	temperature	0,05
XMP 5/35T F001	5...35 °C	0,2...1,0 bar	temperature	0,05
XMP 0/120T F001	0...120 °C	0,2...1,0 bar	temperature	0,05
XMP 80/200 F001	80...200 °C	0,2...1,0 bar	temperature	0,05
XMP 20/90F F001	20...90% rh	0,2...1,0 bar	rel. humidity	0,05
XMP 0/20AF F002	0...20 g/kg	0,2...1,0 bar	abs. humidity	0,05
XMP 0/5ND F001	0...5,0 mbar	0,2...1,0 bar	low pressure	0,05
XMP 5/10ND F001	5...10 mbar	0,2...1,0 bar	low pressure	0,05
XMP 0/100E F001	0...100%	0,2...1,0 bar	standard signal	0,05
XMP 0/16B F001	0...1,6 bar	–	output pressure	0,05
XMP 50/50P F001	-50...50 Pa ¹⁾	–	low pressure	0,05
Accuracy	Class 1,6	Permissible ambient temp.	0...55 °C	
Max. operating pressure	1,4 bar	Dimension drawing	M297045	
XMP 0/16B	1,6 bar			

Accessories

- 0226561...565** Scales for indicating the position of the valve; block of 25 labels
- 0226569 000** Universal scales, gradation 120, 50/100, 30/60, 80/160, $\dot{V} = \sqrt{\Delta P}$, block of 25 labels
- 0226584 000** Scales for indicating the volume flow; block of 25 labels
- 0297044 000*** Accessories for panel fitting

*) Dimension drawing or wiring diagram are available under the same number

1) Pressure gauge for RLP 100 F901/F915 room-pressure controller; indication of room press. Double scale: -20...+20/-50...+50 Pa = 0,2...1,0 bar. The range can be selected by ticking one of two boxes on the scale.

По вопросам продаж и поддержки обращайтесь:

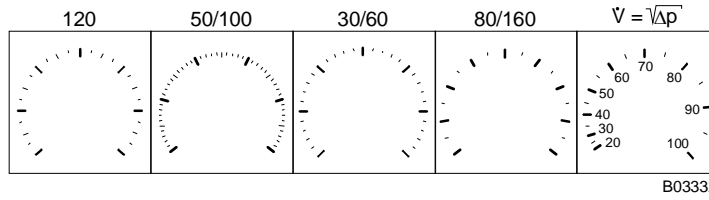
Волгоград +7 (8442) 45-94-42
Екатеринбург +7 (343) 302-14-75
Ижевск +7 (3412) 20-90-75
Казань +7 (843) 207-19-05

Краснодар +7 (861) 238-86-59
Красноярск +7 (391) 989-82-67
Москва +7 (499) 404-24-72
Ниж.Новгород +7 (831) 200-34-65

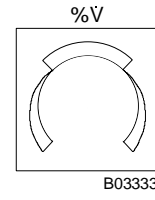
Новосибирск +7 (383) 235-95-48
Омск +7 (381) 299-16-70
Пермь +7 (342) 233-81-65
Ростов-на-Дону +7 (863) 309-14-65

Самара +7 (846) 219-28-25
Санкт-Петербург +7 (812) 660-57-09
Саратов +7 (845) 239-86-35
Сочи +7 (862) 279-22-65

226569 Universal scales for self-inscription



226584



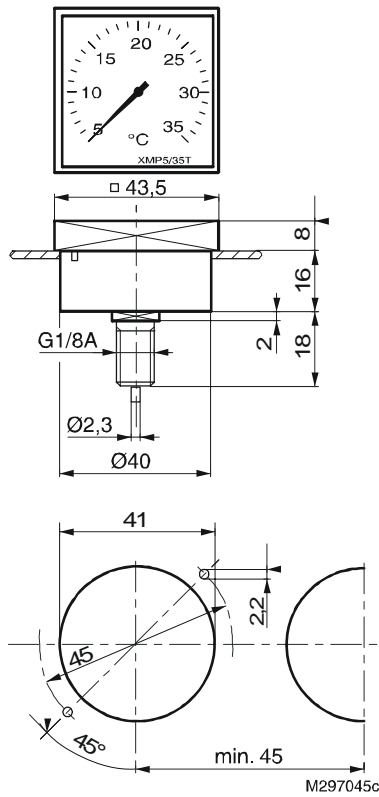
Operation

A Bourdon tube is pressurised, and the pressure is converted into a change of direction which is indicated by a pointer on the scale.

Technical information

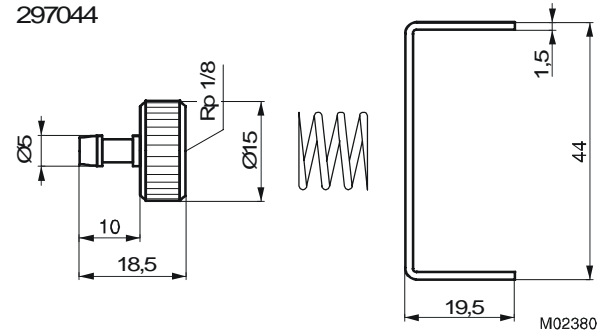
Technical manual: *centair* system 0304991 003

Dimension drawing



Accessories

297044



По вопросам продаж и поддержки обращайтесь:

Волгоград +7 (8442) 45-94-42
 Екатеринбург +7 (343) 302-14-75
 Ижевск +7 (3412) 20-90-75
 Казань +7 (843) 207-19-05

Краснодар +7 (861) 238-86-59
 Красноярск +7 (391) 989-82-67
 Москва +7 (499) 404-24-72
 Ниж.Новгород +7 (831) 200-34-65

Новосибирск +7 (383) 235-95-48
 Омск +7 (381) 299-16-70
 Пермь +7 (342) 233-81-65
 Ростов-на-Дону +7 (863) 309-14-65

Самара +7 (846) 219-28-25
 Санкт-Петербург +7 (812) 660-57-09
 Саратов +7 (845) 239-86-35
 Сочи +7 (862) 279-22-65