

XHP: Pneumatic manual switch

Areas of application

Manual change-over of pneumatic signal lines.

Features

- Four stages
- Can be built into panel or wall-/rail-mounted

Technical description

- k_V (water) = 0.11 m³/h
- Nominal flow rate = 3 m³/h



Type	k_V -value water $\Delta p = 1$ bar	Nominal flow Q_N 1 bar with respect to atmosphere	Weight kg
XHP 3 F001	0,11 m ³ /h	3,0 m ³ /h	0,03
Max. leakage rate (2,5 bar → 0)	1,2 l _n /h	Connection diagram	A03322
Permissible pressure or differential pressure	2,5 bar	Dimension drawing	M297193
Permissible ambient temperature	0...70 °C	Fitting instructions	none

Accessories

- 0296936 000*** Fixing bracket for rail EN 60715, 35 × 20.5 and 35 × 15.
- 0296937 000*** Fixing bracket for C-rail EN 60715-C 20 and for wall mounting.
- 0296990 000*** Buckle-proof adaptor for screw-type installation, MV 7322.
- 0296218 000*** Buckle-proof adaptor for push-on installation.

*) Dimension drawing or wiring diagram are available under the same number

Universal scale (enclosed)	'Open-closed' scale (fitted)	'Manual-closed' scale (rear)	Operation
1	closed	closed	Passage from 1 to 0
2	Aut.	Aut.	Passage from 2 to 0
3	open	closed	Passage from 3 to 0
4	Stop	Stop	No passage to 0

Operation

The dial turns on four O-rings and locks into one of four positions.

Further technical information

Flow rate at other pressures:-

$$\text{Water: } \dot{V} = k_V \cdot \sqrt{\Delta p}$$

$$\text{Air: } \dot{V} = \dot{V}_N \cdot \sqrt{\Delta p \cdot p_2}$$

Δp = pressure difference (bar)

p_2 = absolute pressure, non-pressure side (bar)

\dot{V}_N = nominal flow

По вопросам продаж и поддержки обращайтесь:

Волгоград +7 (8442) 45-94-42
Екатеринбург +7 (343) 302-14-75
Ижевск +7 (3412) 20-90-75
Казань +7 (843) 207-19-05

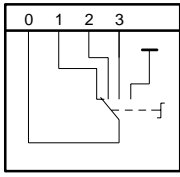
Краснодар +7 (861) 238-86-59
Красноярск +7 (391) 989-82-67
Москва +7 (499) 404-24-72
Ниж.Новгород +7 (831) 200-34-65

Новосибирск +7 (383) 235-95-48
Омск +7 (381) 299-16-70
Пермь +7 (342) 233-81-65
Ростов-на-Дону +7 (863) 309-14-65

Самара +7 (846) 219-28-25
Санкт-Петербург +7 (812) 660-57-09
Саратов +7 (845) 239-86-35
Сочи +7 (862) 279-22-65

© 2012 Sauter Components AG. Alle Rechte vorbehalten. Sauter Components AG, 8200 Schönenbuch, Schweiz. T 03321

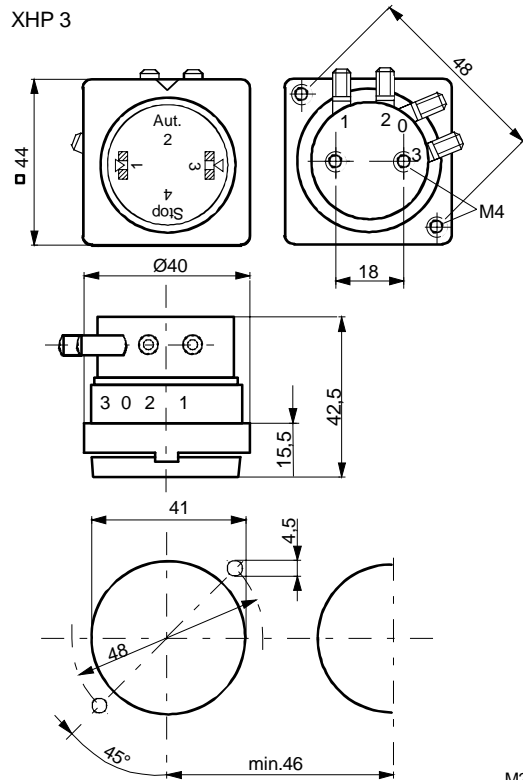
Connection diagram



A03322

Dimension drawing

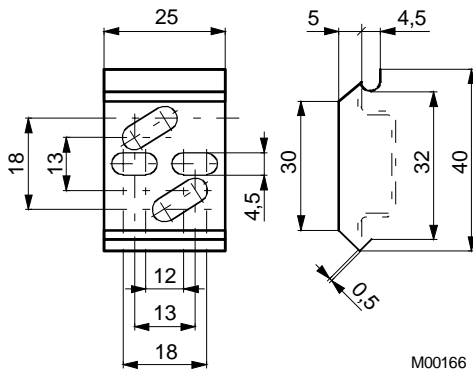
XHP 3



M297193d

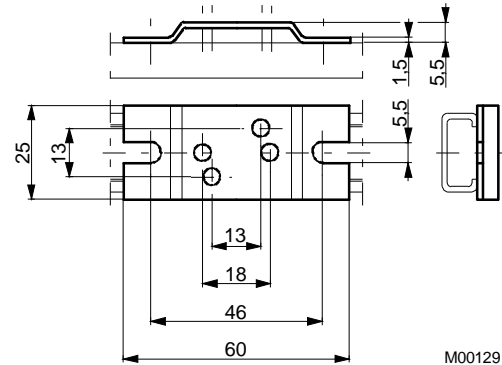
Accessories

296936



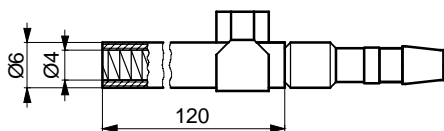
M00166

296937



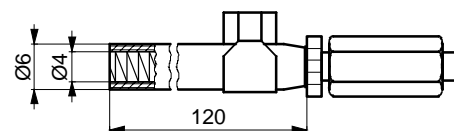
M00129

296218



M00563

296990



M00564

По вопросам продаж и поддержки обращайтесь:

Волгоград +7 (8442) 45-94-42
 Екатеринбург +7 (343) 302-14-75
 Ижевск +7 (3412) 20-90-75
 Казань +7 (843) 207-19-05

Краснодар +7 (861) 238-86-59
 Красноярск +7 (391) 989-82-67
 Москва +7 (499) 404-24-72
 Ниж.Новгород +7 (831) 200-34-65

Новосибирск +7 (383) 235-95-48
 Омск +7 (381) 299-16-70
 Пермь +7 (342) 233-81-65
 Ростов-на-Дону +7 (863) 309-14-65

Самара +7 (846) 219-28-25
 Санкт-Петербург +7 (812) 660-57-09
 Саратов +7 (845) 239-86-35
 Сочи +7 (862) 279-22-65