

## XGP 2L: Heavy-duty, pneumatic control-pressure adjuster

### Areas of application

Remote adjuster for setpoint adjustment of pneumatic controllers (e.g. Centair) with large capacity.  
Manual control of pneumatic control units.

### Features

- Integrated minimum or maximum limiting of control pressures
- Setting knob with interchangeable scales and 2 stops for limiting the setting range or locking the setting
- Suitable for fitting into panels or for recessed mounting
- Complies with directive 97/23/EC Art. 3.3 on pressure equipment

### Technical description

- Supply pressure 1.3 bar  $\pm$  0.1

Type	Setting range <sup>1)</sup> bar	Air capacity $I_p/h$	Weight kg
<b>XGP 2L F001</b>	0...1,2	400	0,09
Supply pressure <sup>2)</sup>	1,3 $\pm$ 0,1 bar	Permissible ambient temp.	0...55 °C
Air consumption <sup>3)</sup>	7 $I_p/h$		
Output pressure	0...1,2 bar		
		Connection diagram	<a href="#">A03466</a>
		Dimension drawing	<a href="#">M297370</a>
		Fitting instructions	<a href="#">MV 7321</a>

### Accessories

- 0296936 000\*** Bracket for EN 60715, 35  $\times$  7,5 and 35  $\times$  15 rail  
**0296937 000\*** Bracket for C EN 60715-C20 rail and for wall mounting  
**0296218 000\*** Buckle-proof connector-adaptor for push-on installation  
**0296990 000\*** Buckle-proof connector-adaptor for screw-type installation; MV 7322

\*) Dimension drawing or wiring diagram are available under the same number

- 1) Scale: 0...1,2 bar, 'tail' increasing in thickness. Rear scale: 0...1,2 bar, 'tail' decreasing.  
Inscribable scale (0...100%) is included underneath the normal scale.  
2) See Section 60 on regulations concerning the quality of supply air, especially at low ambient temperature.  
3) 40  $I_p/h$  when measuring connection is open (provides greater response sensitivity).

### Operation

The transmitter's functions can be split up as follows:-

#### Pressure adjustment

The output pressure increases when the adjuster knob is turned in a clockwise direction. If greater response sensitivity is required, the measuring connection (M4 sealing screw) must be loosened by one or two turns.

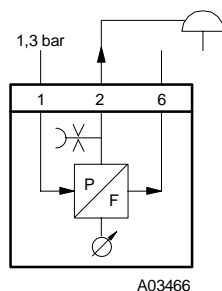
#### Minimum limitation

The minimum value increases when the adjuster knob is turned in a clockwise direction. The setting of the minimum value is protected by an in-built diode. The M4 sealing screw is closed for both bleed-off and non-bleed-off systems.

#### Maximum limitation

The maximum value increases when the adjuster knob is turned in a clockwise direction. The M4 sealing screw is closed for bleed-off systems; for non-bleed-off systems, the M4 sealing screw must be loosened by one or two turns.

### Connection diagram



По вопросам продаж и поддержки обращайтесь:

Волгоград +7 (8442) 45-94-42  
 Екатеринбург +7 (343) 302-14-75  
 Ижевск +7 (3412) 20-90-75  
 Казань +7 (843) 207-19-05

Краснодар +7 (861) 238-86-59  
 Красноярск +7 (391) 989-82-67  
 Москва +7 (499) 404-24-72  
 Ниж.Новгород +7 (831) 200-34-65

Новосибирск +7 (383) 235-95-48  
 Омск +7 (381) 299-16-70  
 Пермь +7 (342) 233-81-65  
 Ростов-на-Дону +7 (863) 309-14-65

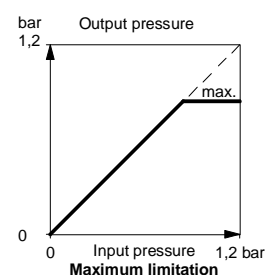
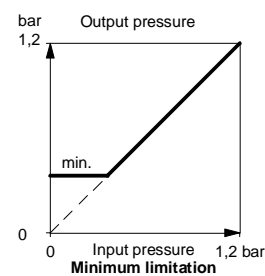
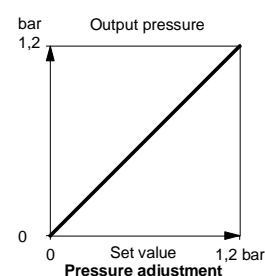
Самара +7 (846) 219-28-25  
 Санкт-Петербург +7 (812) 660-57-09  
 Саратов +7 (845) 239-86-35  
 Сочи +7 (862) 279-22-65



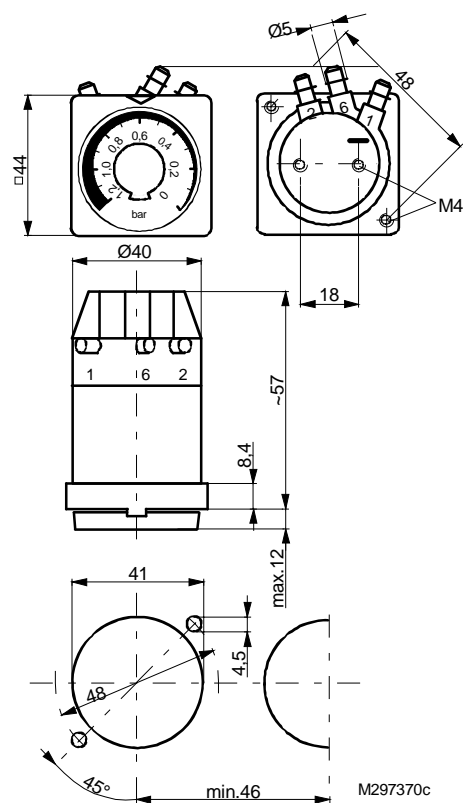
T03215



Y03461

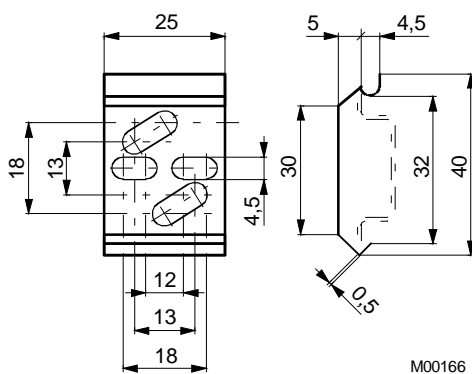


Dimension drawing

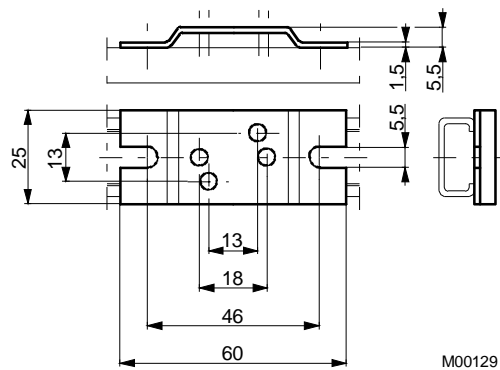


Accessories

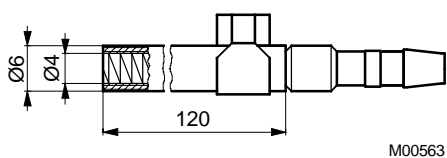
296936



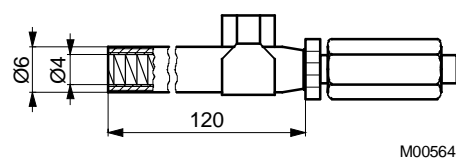
296937



296218



296990



По вопросам продаж и поддержки обращайтесь:

Волгоград +7 (8442) 45-94-42  
 Екатеринбург +7 (343) 302-14-75  
 Ижевск +7 (3412) 20-90-75  
 Казань +7 (843) 207-19-05

Краснодар +7 (861) 238-86-59  
 Красноярск +7 (391) 989-82-67  
 Москва +7 (499) 404-24-72  
 Ниж.Новгород +7 (831) 200-34-65

Новосибирск +7 (383) 235-95-48  
 Омск +7 (381) 299-16-70  
 Пермь +7 (342) 233-81-65  
 Ростов-на-Дону +7 (863) 309-14-65

Самара +7 (846) 219-28-25  
 Санкт-Петербург +7 (812) 660-57-09  
 Саратов +7 (845) 239-86-35  
 Сочи +7 (862) 279-22-65