

Areas of application

Pneumatic systems

Features

- PDS offers an overview of connection components and installation equipment
- Item for fast fitting on site or in motor control centre

Type	Description	Tube di mm	Thread	Material
0277790 000*	Hose clamp d = 6 for T > 40 °C			
0296218 000*	Union piece, plug-in type	4		
0296990 000*	Union piece, screw type	4		
0297169 000*	'Plasto-Joint' sealing stick			
0297354 000*	Connection nipple, R 1/8, for tube d = 4	4		
0297772 001*	Screw-type nipple, M4	4		
0382050 004*	Screw-in connector, straight	4	G 1/8	Brass, nickel-plated
0382050 006*	Screw-in connector, straight	6	G 1/8	Brass, nickel-plated
0382050 008*	Screw-in connector, straight	8	G 1/8	Brass, nickel-plated
0382051 004*	T-piece	4		Polymer H.F.
0382051 006*	T-piece	6		Polymer H.F.
0382051 008*	T-piece	8		Polymer H.F.
0382052 010*	T-piece	10		Polymer H.F.
0382053 004*	Union piece	4 - 6		Polymer H.F.
0382053 006*	Union piece	6 - 8		Polymer H.F.
0382054 004*	Schott connector	4		Polymer H.F.
0382054 006*	Schott connector	6		Polymer H.F.
0382054 008*	Schott connector	8		Polymer H.F.
0382055 004*	Plug	4		Polymer H.F.
0382055 006*	Plug	6		Polymer H.F.
0382055 008*	Plug	8		Polymer H.F.
0382056 004*	Y-piece	4 - 6		Polymer H.F.
0382056 006*	Y-piece	6 - 6		Polymer H.F.
0382057 004*	Y-piece, screw-in plug	4	G 1/8	Polymer/brass
0382057 006*	Y-piece, screw-in plug	6	G 1/8	Polymer/brass
0382058 008*	Screw-in connector	8	R 3/8	Polymer/brass
0382059 006*	Elbow, screw-on connector		G 1/8	Polymer/brass
0382059 008*	Elbow, screw-on connector		G 1/8	Polymer/brass
0382060 004*	Elbow, screw-in connector		G 1/8	Polymer/brass
0382060 006*	Elbow, screw-in connector		G 1/8	Polymer/brass
0382060 008*	Elbow, screw-in connector		G 1/4	Polymer/brass
0382060 010*	Elbow, screw-in connector		G 3/8	Polymer/brass
0382061 004*	Elbow, screw-in rotary connector			Polymer/brass
0382062 008*	T-shaped, three-fold, plug-in connector	8 - 6		Polymer/brass
0382062 010*	T-shaped, three-fold, plug-in connector	10 - 8		Polymer/brass
0382063 006*	8-fold distributor	6	G 1/4	Anodised aluminium
0382063 008*	6-fold distributor	8	G 3/8	Anodised aluminium
0382064 007*	Through ball valve		G 3/8	Brass, nickel-plated

Accessories

- 5658900 000 100m flexible tube, da/di = 8/5,5mm, black, for Dp measurement [effect. pressure (+/-)]
- 5658901 000 100m flexible tube, da/di = 6/4mm, black, for actuating pressure for damper drive
- 5658902 000 100m flexible tube, da/di = 8/5,5mm, red, for supply pressure
- 5658903 000 100m flexible tube, da/di = 4/2,5mm, green, for V (actual) room balancing, TUP224 F901
- 5658904 000 100m flexible tube, da/di = 6/4mm, red, for supply pressure
- 5658905 000 100m flexible tube, da/di = 8/5,5mm, blue, for reference pressure line, room pressure
- 5658906 000 100m flexible tube, da/di = 6/4mm, yellow, for signal pressure line, room sensor
- 5658907 000 100m flexible tube, da/di = 4/2,5mm, yellow, room pressure shift, RXP 212
- 5658920 000 25m flexible double tube, da/di = 6/4, black+blue, for Dp measurement [ef. press. (+/-)]

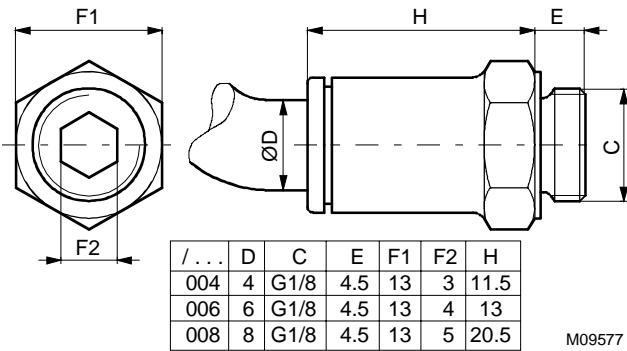
*) Dimension drawing for accessories is available under the same number.

По вопросам продаж и поддержки обращайтесь:

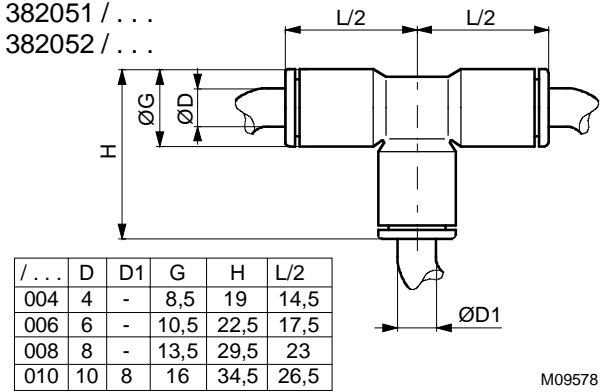
- | | | | |
|---------------------------------|---------------------------------|-----------------------------------|------------------------------------|
| Волгоград +7 (8442) 45-94-42 | Краснодар +7 (861) 238-86-59 | Новосибирск +7 (383) 235-95-48 | Самара +7 (846) 219-28-25 |
| Екатеринбург +7 (343) 302-14-75 | Красноярск +7 (391) 989-82-67 | Омск +7 (381) 299-16-70 | Санкт-Петербург +7 (812) 660-57-09 |
| Ижевск +7 (3412) 20-90-75 | Москва +7 (499) 404-24-72 | Пермь +7 (342) 233-81-65 | Саратов +7 (845) 239-86-35 |
| Казань +7 (843) 207-19-05 | Ниж.Новгород +7 (831) 200-34-65 | Ростов-на-Дону +7 (863) 309-14-65 | Сочи +7 (862) 279-22-65 |

Dimension drawings

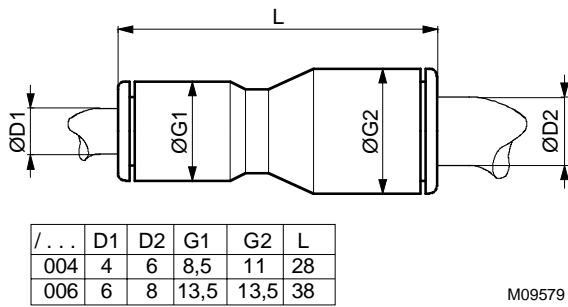
382050 / ...



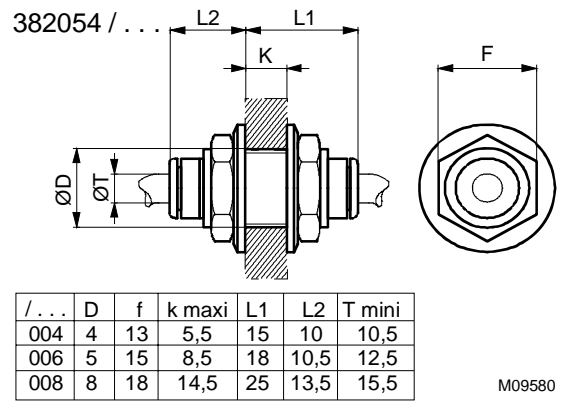
382051 / ...
382052 / ...



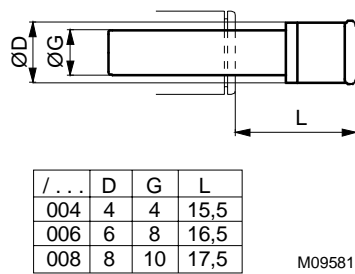
382053 / ...



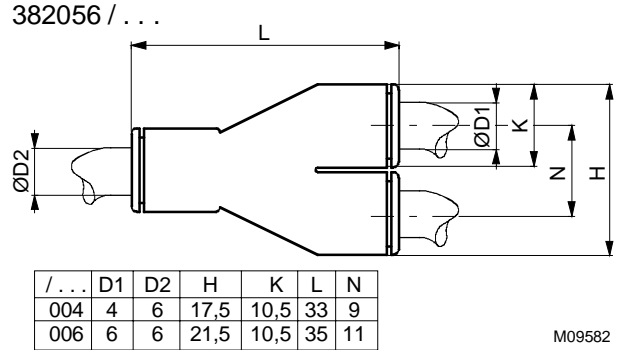
382054 / ...



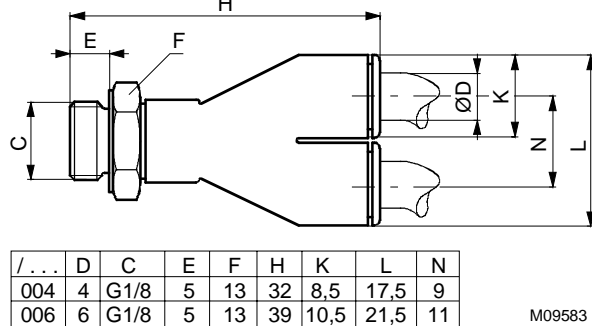
382055 / ...



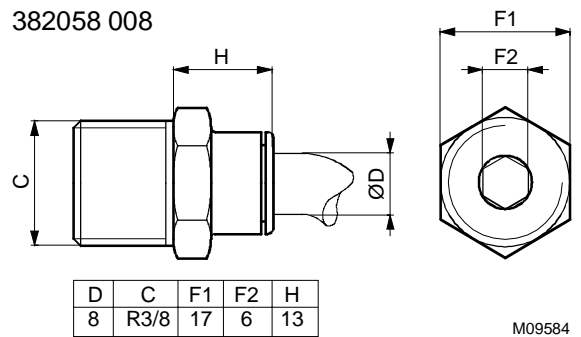
382056 / ...

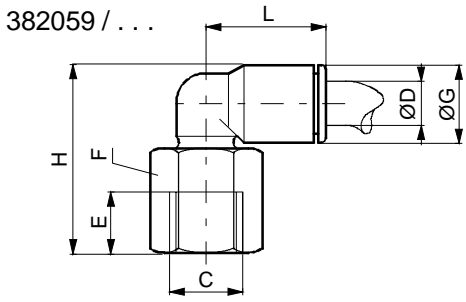


382057 / ...



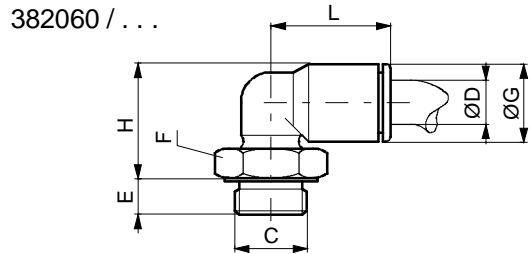
382058 008





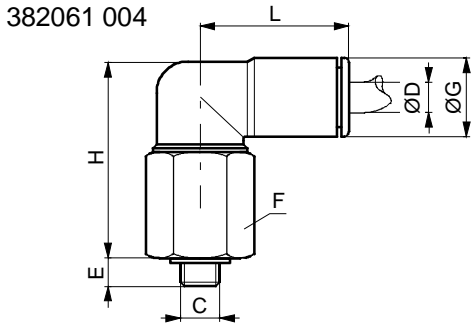
/... D	C	E	F	G	H	L
006	6 G1/8	8,5	13	10,5	25	16
008	8 G1/8	8,5	13	13,5	28	23

M09585



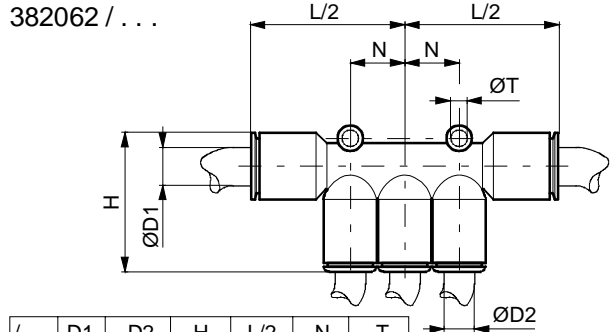
/... D	C	E	F	G	H	L
004	4 G1/8	5	13	8,5	13	14
006	6 G1/8	5	13	10,5	15	16
008	8 G1/4	5,5	16	13,5	18,5	23
010	10 G3/8	5,5	20	16	22	26,5

M09586



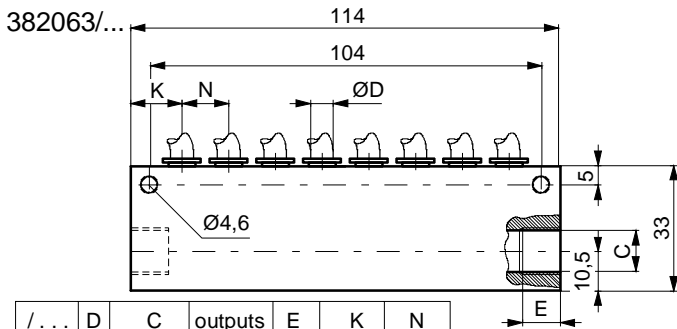
D	C	E	F	G	H	L
4	M5x0,8	3,5	12	10	25	19,5

M09587



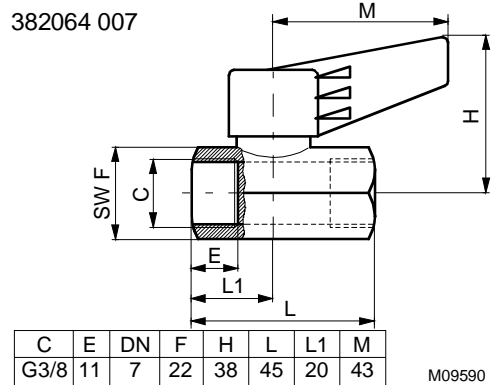
/... D1	D2	H	L/2	N	T
008	8	6	24,5	37	11,5
010	10	8	36	40,5	14,5

M09588



/... D	C	outputs	E	K	N
006	6 G1/4	8	10	13,5	12,5
008	8 G3/4	6	12	19	15

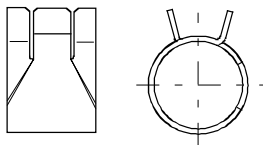
M09589



C	E	DN	F	H	L	L1	M
G3/8	11	7	22	38	45	20	43

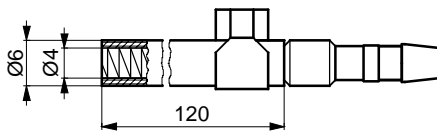
M09590

277790



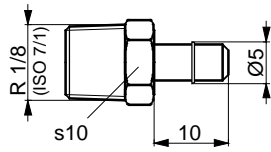
M02438

296218



M00563

297354



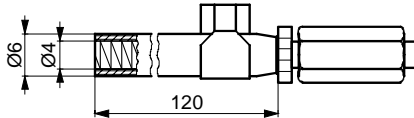
M00568

297169



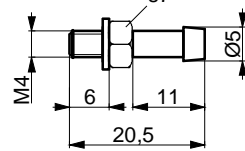
M02442

296990



M00564

297772



M03499

По вопросам продаж и поддержки обращайтесь:

Волгоград +7 (8442) 45-94-42
 Екатеринбург +7 (343) 302-14-75
 Ижевск +7 (3412) 20-90-75
 Казань +7 (843) 207-19-05

Краснодар +7 (861) 238-86-59
 Красноярск +7 (391) 989-82-67
 Москва +7 (499) 404-24-72
 Ниж.Новгород +7 (831) 200-34-65

Новосибирск +7 (383) 235-95-48
 Омск +7 (381) 299-16-70
 Пермь +7 (342) 233-81-65
 Ростов-на-Дону +7 (863) 309-14-65

Самара +7 (846) 219-28-25
 Санкт-Петербург +7 (812) 660-57-09
 Саратов +7 (845) 239-86-35
 Сочи +7 (862) 279-22-65