

XSP: Pneumatic positioner

How energy efficiency is improved

Enables precise control of energy consumption using pneumatic actuators.

Areas of application

Can be used in combination with pneumatic actuators AK41 - 43 P and valve actuators AV43, AVP 142 plus AVP242 - 244.

Features

- Conversion of a continuous output signal into a defined position on the pneumatic drive
- The use of a positioner provides increased setting accuracy, range partition, changing direction of travel and an increase in positioning speed
- Housing of light-metal alloy
- Compressed-air connections with Rp 1/8" female thread
- Measuring connection for output pressure with M4 thread
- Measuring valve stroke using a measuring spring
- Complies with directive 97/23/EC Art. 3.3

Technical description

- Supply pressure 1.3 bar \pm 0.1
- Linearity 1%



Y02665

Type	Description	Setting ranges in bar		Weight kg
		zero	span	
XSP 31 F001	fitted with cover	0,2...1,0	0,2...1,0	0,1
Supply pressure ¹⁾	1,3 bar \pm 0,1	Connection diagram		A01666
Max. control pressure	1,4 bar	Dimension drawing XSP 31		M274956
Max. air capacity	1000 I _n /h	Fitting instructions		
Air consumption	approx. 30 I _n /h	XSP 31 on AVP 142, AV43 P		MV 43143
Linearity	approx. 1%	XSP 31 on AVP 242...244		MV 506039
Perm. ambient temperature	0...70 °C	XSP 31 on AK41...43		MV 506088

Accessories

0274553 000 Restrictor \varnothing 0,7 mm for reducing the air capacity when the supply pressure is low.

..... Assembly material: see drive data sheet, Section 71.

¹⁾ See Section 60 on regulations concerning the quality of supply air, especially at low ambient temperatures.

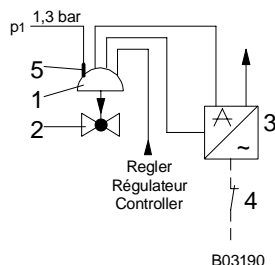
Operation

In the steady-state condition, the forces acting on the double-armed lever (measuring spring, input pressure and zero-point pressure) cancel each other out. If an imbalance arises (by a change in input pressure or in stroke), then the control element is activated, thereby changing the pressure in the drive until the balance is restored (force-compensation principle) via the stroke and the measuring spring. Stroke measurement on the XSP 31 is effected via a spring.

Engineering notes

Fitting pneumatic drives with the XSP 31 to valves with push-type plug (non-Sauter types)

If there is a necessity for the valve to close when the drive is not under pressure, and if the supply pressure can be switched off either due to a power failure or by a limiter, then an electro-pneumatic relay must be fitted between drive and positioner. This ensures that, whenever the supply pressure is switched off, the valve is closed by spring pressure within seconds (emergency function).



- 1) pneumatic drive, AV42 P10, function A
- 2) non-Sauter valve, normally closed
- 3) electro-pneumatic relay, RUEP
- 4) mains monitor
- 5) pneumatic positioner, XSP 31

B03190

По вопросам продаж и поддержки обращайтесь:

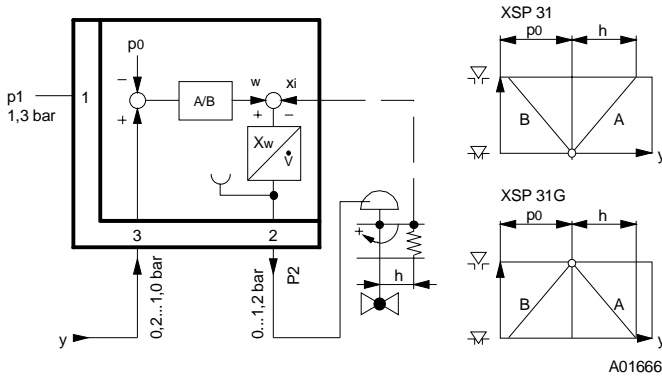
Волгоград +7 (8442) 45-94-42
Екатеринбург +7 (343) 302-14-75
Ижевск +7 (3412) 20-90-75
Казань +7 (843) 207-19-05

Краснодар +7 (861) 238-86-59
Красноярск +7 (391) 989-82-67
Москва +7 (499) 404-24-72
Ниж.Новгород +7 (831) 200-34-65

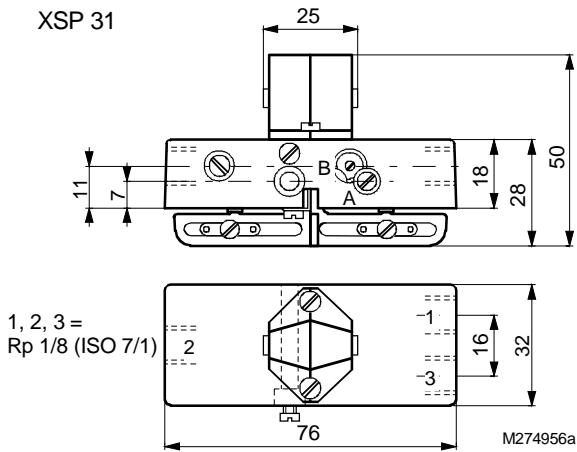
Новосибирск +7 (383) 235-95-48
Омск +7 (381) 299-16-70
Пермь +7 (342) 233-81-65
Ростов-на-Дону +7 (863) 309-14-65

Самара +7 (846) 219-28-25
Санкт-Петербург +7 (812) 660-57-09
Саратов +7 (845) 239-86-35
Сочи +7 (862) 279-22-65

Connection diagram



Dimension drawing



По вопросам продаж и поддержки обращайтесь:

- | | | | |
|---------------------------------|---------------------------------|-----------------------------------|------------------------------------|
| Волгоград +7 (8442) 45-94-42 | Краснодар +7 (861) 238-86-59 | Новосибирск +7 (383) 235-95-48 | Самара +7 (846) 219-28-25 |
| Екатеринбург +7 (343) 302-14-75 | Красноярск +7 (391) 989-82-67 | Омск +7 (381) 299-16-70 | Санкт-Петербург +7 (812) 660-57-09 |
| Ижевск +7 (3412) 20-90-75 | Москва +7 (499) 404-24-72 | Пермь +7 (342) 233-81-65 | Саратов +7 (845) 239-86-35 |
| Казань +7 (843) 207-19-05 | Ниж.Новгород +7 (831) 200-34-65 | Ростов-на-Дону +7 (863) 309-14-65 | Сочи +7 (862) 279-22-65 |

Sauter Components

0' <lt;zt B r t q/uqmwkqp0 w'w' <lt; B r t q/uqmwkqp0 w'w' <!' :22'733'!: '92